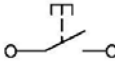


**WARNING! Do not install, wire, maintain, or inspect the buzzer switch while the power supply is turned on. Failure to comply could result in electric shock or fire hazard.**

**CAUTION! Do not modify the buzzer switch. Failure to comply could result in damage to the buzzer switch and will void the warranty. Magnetek is not responsible for any modification of the product made by the user.**

Please inspect the delivered product to ensure that it is correct. This instruction sheet should be used for the SBU-BzS-B buzzer switch.

### Specifications

Specification	Buzzer Switch Model Number(s)
	SBU-BzS-B
Rating	3A 250VAC (AC-15 for electromagnetic switching operation)
Installation Environment	23°F to 104°F (-5°C to 40°C)* *no condensation or freezing
Contact Configuration	1a 

### Installation/Removal

#### Installing the Buzzer Switch

- There are two channels in the portion of the casing. The channels attach along the length of the enclosure.
- The wrench for the hexagon nut (Figure 1) is attached to the buzzer switch.
- Tighten the locking ring using the wrench to a torque of 4.5 – 5 kgf.cm (0.44 – 0.90 N.m).

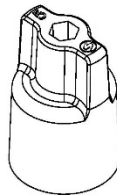


Figure 1: Wrench for Hexagon Nut

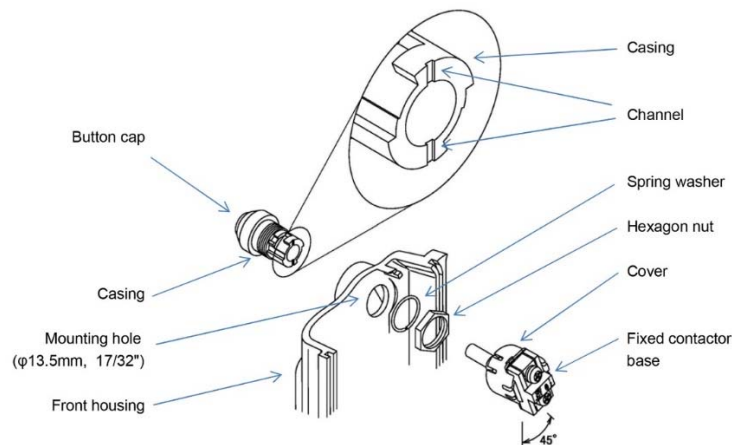


Figure 2: Installation Diagram

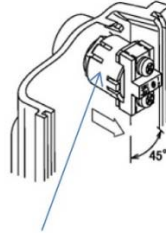


- Lean the fixed contactor base to 45° and insert the casing.
- Rotate the fixed contactor base clockwise to 45° (see Figure 2).
- Use the round crimp terminals.
- Tighten the M4 terminal screws to a tightening torque of 12 – 14 kgf.cm (1.2 – 1.4 N.m).

### Removing the Buzzer Switch

#### Primary Method

- Remove the terminal screws.
- Remove the wiring.
- Rotate the fixed contactor base counterclockwise to 45°.
- Pull the fixed contactor base.
- Remove the hexagon nut and spring washer.
- Pull the button cap and casing from the front housing.

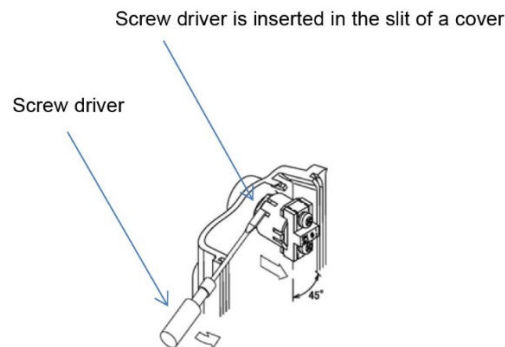


Rotate the fixed contactor base counterclockwise to 45°  
Pull the fixed contactor base from the casing.

**Figure 3: Primary Buzzer Removal Method**

#### Alternate Method

- Alternately, insert a flathead screwdriver into the slit of the cover, and the pawl of the cover is deformed.
- Rotate the fixed contactor base counterclockwise to 45°, and the fixed contactor base is drawn out.
- Remove the hexagon nut and spring washer.
- Pull the button cap and casing from the front housing.



**Figure 4: Alternate Buzzer Removal Method**

### Operation

Do not expose the buzzer switch to excessive shocks and vibrations. Otherwise, the switch may become deformed or damaged, causing malfunctions or operation errors.